

The logo features a stylized icon on the left consisting of a 5x5 grid of circles. The circles in the first two columns are solid, while the circles in the last two columns are crescent-shaped, suggesting a globe or a map. To the right of this icon, the word "FIMAP" is written in a bold, sans-serif font. A registered trademark symbol (®) is located at the top right of the letter "P".

**FIMAP®**

**Maximize cleaning operations  
with the unique advantages of lithium batteries**





Lithium batteries are the most advanced and efficient technological solution for powering electric vehicles.

Compared to conventional batteries, they offer unrivalled advantages, especially when it comes to intensive use such as with cleaning machines.

**Being lighter, they are more convenient and consume less energy, but deliver more power and consistently, without failure, until the final discharging phase.**

In addition to having shorter charge times, they are virtually always ready for use, thanks to the partial recharges. Unlike conventional batteries, which are affected by partial recharging, lithium batteries benefit from it, which leads to enhanced durability and efficiency.



**In cleaning operations, this results in greater machine availability and flexibility, factors that increase productivity**



### **MAXIMUM POWER**

They deliver more power than conventional batteries, up to 30% more, and steadily



### **MAXIMUM ENDURANCE**

Frequent charging ensures long battery life. Cycle life is more than twice as long as conventional lead-acid. In addition, they are able to sustain up to 3 full charge cycles per day, compared to the single cycle that other batteries can withstand



### **FAST CHARGING**

Full charging takes less time and it is possible to benefit from the flexibility of partial charges



### **ALWAYS READY TO USE**

Partial charges increase the machine availability. It is possible to adapt the recharges to the needs of the cleaning operation, taking advantage of the intervals when the machine is not in use, so that it will be charged and ready when use is resumed



## LOW OPERATING AND MAINTENANCE COSTS

Whereas conventional batteries require constant maintenance, with lithium batteries the time and cost of maintenance and management are reduced to zero



## MORE SAFETY

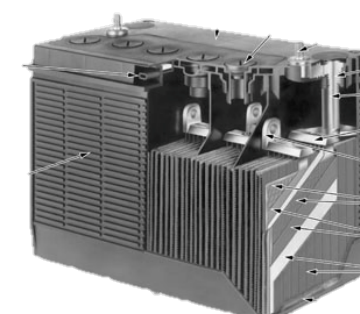
They are safer, as the operator does not come into contact with harmful gases or acids



## COMPACT DESIGN

They are smaller and lighter, and therefore more convenient

### LEAD ACID Batteries



30 kg/kWh

### LI-ION Batteries



8 kg/kWh

Lithium iron phosphate



# LI-ION TECHNOLOGY

## TECHNOLOGY

## RECHARGE CYCLES

## PARTIAL RECHARGE

## EFFICIENCY



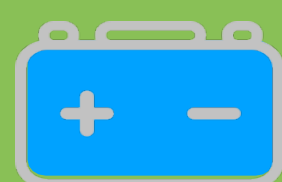
Li-ion

> 1500



YES

95%



AGM / GEL

500-800

NO

80-85%

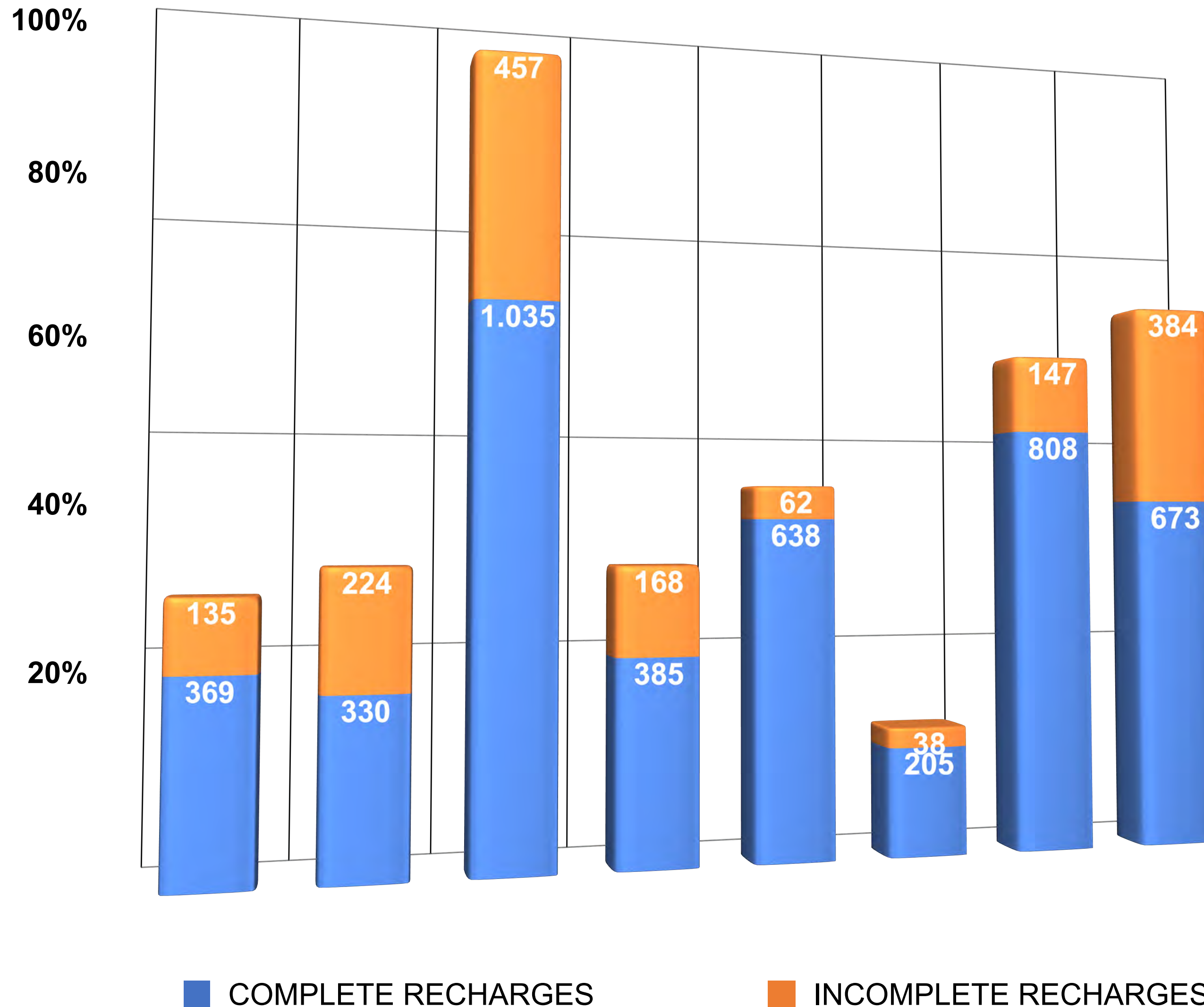


LEAD ACID BATTERIES

600-900

NO

80-85%



**NO MORE  
CHARGING  
PROBLEM**

**26% average  
of incomplete  
recharges**



## **TO PRESERVE FIMAP QUALITY, CHOOSE ONLY ORIGINAL BATTERIES**

**Only Fimap lithium batteries can ensure high performance and maximum efficiency in the long term.**

They are tested and approved by Fimap to combine perfectly with the machines for which they are intended and ensure that they work according to Fimap's quality standards.

**Only Fimap original batteries can provide you:**

- **Guaranteed performance over time**
- **Efficiency in consumption and performance**
- **Safe and proper use of the machine**

## TO PRESERVE FIMAP QUALITY, CHOOSE ONLY ORIGINAL BATTERIES

For all the machines with on-board charger, the corresponding lithium package is available, which includes:



**SHUNT KIT**  
for correct reading of the  
battery level

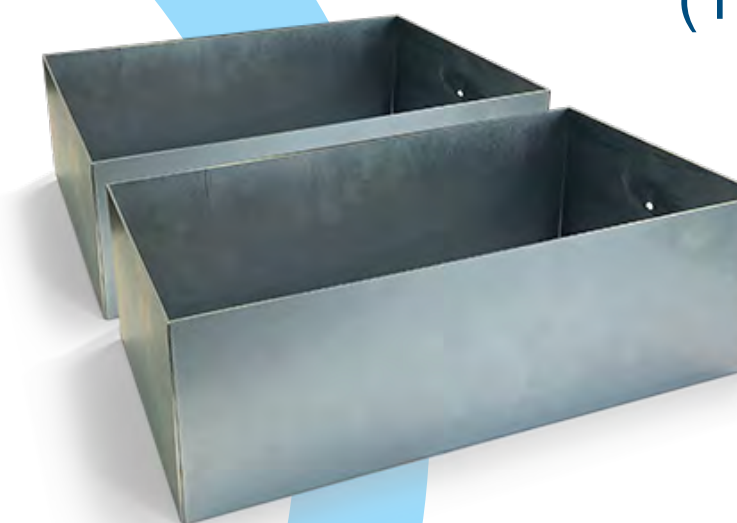
**CONNECTION  
CABLES**



**LI-ION BATTERIES**  
(1 o 2)



**BATTERY TRAYS**  
(1 o 2)



**BALLAST**  
placed in the battery tray





For some models it is possible to choose a 2-battery package, so as to double the working autonomy and benefit from the advantages of lithium even during long cleaning shifts.

## KIT LI-ION BATTERIES

**50Ah**

**100Ah**

**100Ah**

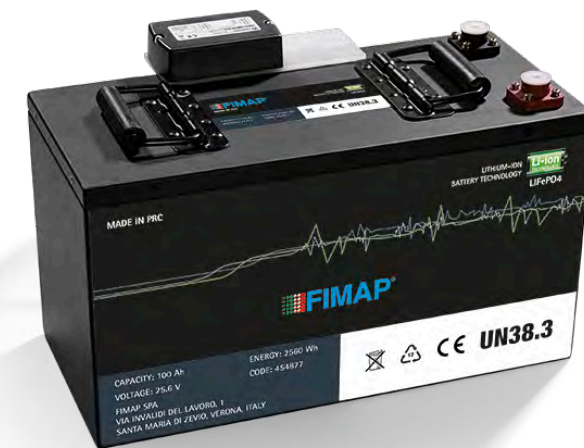
**200Ah**



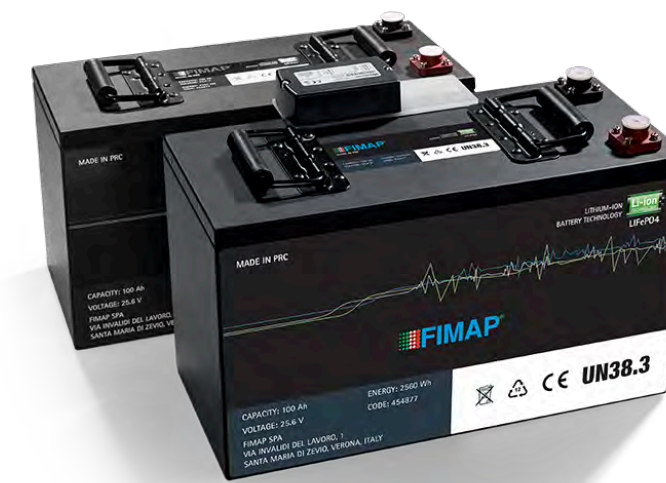
**24V 50Ah**  
(1 Battery)



**24V 50Ah**  
(2 Batteries)



**24V 100Ah**  
(1 Battery)



**24V 100Ah**  
(2 Batteries)



iMx



EMx



Maxima



BMg



MMx



Mxr



FSR



MxL



MMg



Mr



FSR7



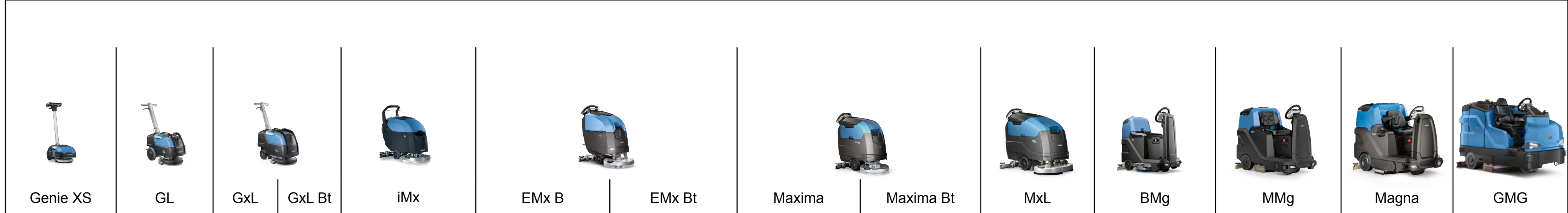


**The complete range of machines  
that can fit batteries  
with LI-ION technology**



PERFORMANCE SCRUBBING MACHINES

SWEEPER-SCRUBBERS



	Genie XS	GL	GxL	GxL Bt	iMx	EMx B	EMx Bt	Maxima	Maxima Bt	MxL	BMg	MMg	Magna	GMG	GMG Combinata	
BATTERY CHARGER	EXTERNAL	ON-BOARD														EXTERNAL
BATTERIES	(36,5 V)	(24 V)	(24 V)	(24 V)	(24 V)	(24 V)	(24 V)	(24 V)	(24 V)	(24 V)	(24 V)	(24 V)	(24 V)	(24 V)	(36 V)	(36 V)
Ah (n.)	6 Ah (1)	30 Ah (1)	30 Ah (1)	50 Ah (1)   50 Ah (2)	50 Ah (1)   50 Ah (2)	50 Ah (1)   50 Ah (2)	50 Ah (1)   50 Ah (2)	50 Ah (1)   50 Ah (2)	50 Ah (1)   50 Ah (2)	100 Ah (1)   100 Ah (2)	50 Ah (1)   50 Ah (2)	100 Ah (1)   100 Ah (2)	420 Ah (1)	720 Ah (2)	720 Ah (1)	
BATTERY CODE	106953* (Machine code EU**)	230701	230701	231822   231823	231854   231855	231854   231855	231852   231853	231816   231817	231827   231826	231830   231832	231840   231841	457180	456224	456224		
TIME TO FULL CHARGE (h)	2:30	5	3:45	3:45   7:30	3:30   7	3:30   7	2:45   5:30	2:45   5:30	3:15   6:30	2:45   5:30	3:15   6:30	4	3:45	3:45		
RUN TIME (h)	1:15	2	3   2	2   4	2   4	1:40   3:20	2:30   5	2   2	2   4	1:30   3	1:45   3:15	6:30	10	7		
RUN TIME WITH 1 HOUR CHARGE (h)	0:30	0:15	0:25   0:20	0:30	0:35	0:30	1	0:40	0:40	0:35	0:30	2	2	1:20		

\* Machine code includes lithium batteries  
 \*\* See the specific list price



	ORIGINAL SCRUBBING MACHINES								SWEEPING MACHINES					
	FIMOP	Genie	Mmx	Mxr	Mr				FSW5	FSR B	FSR7			
BATTERY CHARGER	EXTERNAL	ON-BOARD								ON-BOARD				
BATTERIES	(25,6 V)	(12 V)	(24 V)		(24 V)		(24 V)		(12 V)	(24 V)		(24 V)		
Ah (n.)	5,2 Ah (1)	50 Ah (1)	50 Ah (1)	50 Ah (2)	50 Ah (1)	50 Ah (2)	100 Ah (1)	100 Ah (2)	100 Ah (1)	50 Ah (1)	50 Ah (2)	100 Ah (1)	100 Ah (2)	
BATTERY CODE	107050* (Machine code)	110904* (Machine code)	231854	231855	231860	231863	231866	231867	232155	232140	232141	232223	232222	
TIME TO FULL CHARGE (h)	3:30	6	3:45	7:30	2:45	5:30	3:15	6:30	10:00	2:45	5:30	4:00	8:00	
RUN TIME (h)	1	1:30	2	4	1:30	3	2	4	2	1:45	3:30	3:30	7:00	
RUN TIME WITH 1 HOUR CHARGE (h)	0:20	0:15	0:30	0:35	0:40				0:20	0:40		1:00		

\* Machine code includes lithium batteries

**Ownership of the information and/or documents:**

All information (by which we mean all data and information with the sole exception of that of common knowledge or which FIMAP has disclosed without reserve) and all documents (drawings, photos, etc.) are the exclusive property of FIMAP and their use does not mean there is any kind of acquisition of titles, property or exploitation of rights or licences except for the limited permission of use ruled by this document.

By way of example and, therefore, not limited to, such information and/or documents can be the following:

**Marketing section:**

high definition digital images for the implementation of commercial catalogues on paper or web sites, company trademarks, original graphical documents from which texts are taken (e.g. the descriptive notes), PDF documents and original documents in .ppt format.

**Professional use of the data:**

It is a known fact that the information and/or documents, subject of this commitment, are and will be used by the beneficiary exclusively for carrying out his professional business and, therefore, no specific laws regarding consumer protection are applicable.

**Confidentiality:**

The Party that benefits from the information or use of documents taken from or, in any case, part of the commercial documentation, shall use all such information and/or documents with maximum care solely for the purposes connected to execution of this contract with FIMAP and shall: keep such information and/or documents confidential except for those, due to their nature, which are to be disclosed (promo-advertising material etc.);

shall not divulge any information and/or document to its suppliers, collaborators or employees beyond what is strictly necessary so that they may fulfil their tasks concerning relations with FIMAP and shall ensure that the suppliers, collaborators and employees that have access to the information and/or documents are, in turn, bound by a confidentiality commitment to the benefit of FIMAP; shall not divulge any information to third parties without the prior written consent by FIMAP; copy and/or in any other way reproduce any information or document without the prior written consent of FIMAP; take all the necessary measures to protect confidentiality.

**Returning Information and/or documents:**

Whilst maintaining exclusive ownership at all times, FIMAP has the right, at any time, to ask in writing or by e-mail, that all the information and/or documents received be returned or no longer used and within the term of thirty days from receipt of this request, all the information and/or documents must be returned, including any copies, or destroy such information and/or documents and relative copies so as to prevent them from being recovered and FIMAP must be given a written declaration certifying that the information and/documents have all either been returned or destroyed.

This obligation to return, destroy or no longer use is set automatically in motion when the relationship is cancelled with FIMAP for any reason whatsoever.

**Applicable law, cancelling clauses and Court having jurisdiction:**

The interpretation, integration, execution and the effects of this commitment will be governed by Italian law.

If one or more points of this agreement are cancelled it does not invalidate the remaining points.

All disputes will be put to the exclusive jurisdiction of the Verona Courts.

The logo for FIMAP features a stylized icon on the left consisting of a grid of circles, with the right side of each circle in the grid being a crescent moon shape. To the right of this icon, the word "FIMAP" is written in a bold, white, sans-serif font, followed by a registered trademark symbol (®).

**FIMAP®**